

## Registration Form

Name: \_\_\_\_\_

Company: \_\_\_\_\_

Address: \_\_\_\_\_

City: \_\_\_\_\_

State: \_\_\_\_\_ Zip Code: \_\_\_\_\_

Phone: (\_\_\_\_\_) \_\_\_\_\_

Fax: (\_\_\_\_\_) \_\_\_\_\_

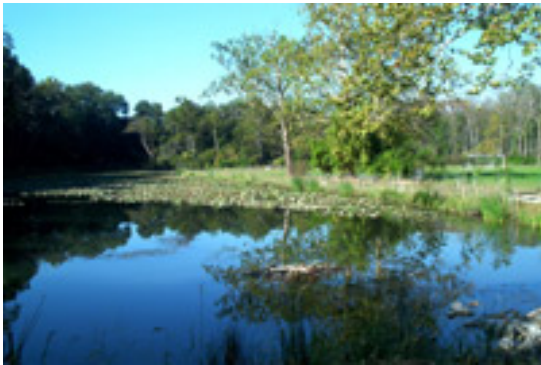
E-mail \_\_\_\_\_

Lunch-Vegetarian Option Yes \_\_\_ No \_\_\_

**Registration Fee: \$30/person**  
(Fee includes program, refreshments,  
box lunch and tour.)

**Be prepared to pay a gate fee at the park  
entrance**

**Pre-registration required by March 13, 2009**  
to ensure adequate space.



*No refunds after March 13, 2009.*

Make checks payable to:  
**Marion Co. Soil & Water Conservation District**

Mail completed registration form & check to:  
**Marion Co. Soil & Water Conservation District**  
6960 S. Gray Rd, Suite C  
Indianapolis, IN 46237

Questions? Call (317) 786-1776 or  
e-mail: ron-lauster@iaswcd.org

Dated material ~ please deliver by March 4, 2009



**Hoosier Heartland RC&D Council, Inc.**  
c/o Marion Co. Soil & Water Conservation District  
6960 South Gray Rd, Suite C  
Indianapolis, IN 46237  
www.hhrdcd.org ~ www.marionswcd.org

## GREEN SITE PLANNING WORKSHOP



### A Workshop for Land Planning Professionals

*Featuring Nationally Known Presenters David  
Dods and Kari Mackenbach with URS*

**March 26, 2009**

**8:30 a.m. to 4:00 p.m.**

### **Earth Discovery Center Eagle Creek Park**

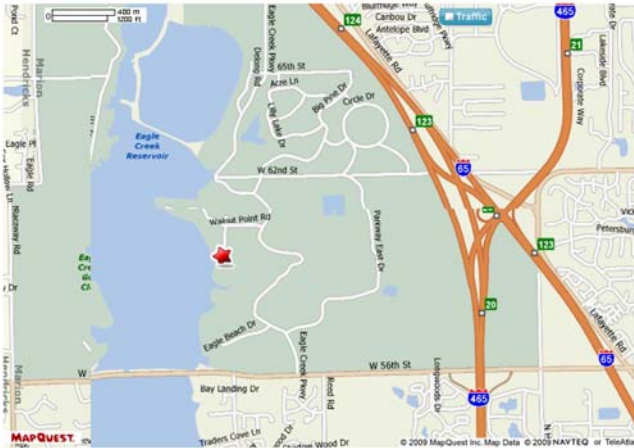
**Indianapolis, Indiana**

A Continuing Education Opportunity for  
Landscape Architects

# GREEN SITE PLANNING WORKSHOP - INDIANAPOLIS, INDIANA

## Earth Discovery Center

7840 West 56th Street  
Indianapolis, IN 46222



### Earth Discovery Center Location:

We will be meeting at the Earth Discovery Center at Eagle Creek Park on the west side of Indianapolis, Indiana. Upon entering the Park from 56th Street, you will continue on the main road and make the second left on Walnut Point Road. Turn left on DeLong Road and continue until you reach the Earth Discovery Center at the end of the road. After the meeting we will tour the Earth Discovery Center.

### Earth Discovery Center Background Information:

To learn more about the Earth Discover Center visit:  
[http://eaglecreekpark.org/edc\\_information.html](http://eaglecreekpark.org/edc_information.html)

## Green Site Planning Agenda

- 8:30 AM Registration
- 9:00 AM Welcome
- 9:05 AM Introduction to the Indianapolis Office of Sustainability – John Hazlett, Program Manager, Office of Sustainability.
- 9:45 AM Example of Green Infrastructure – Jeremy Kosegi, Project Manager, Clean Stream Team
- 10:15 AM Break
- 10:30 AM Successful Installation and Maintenance of Native Plant Communities – Kevin Tungsavick, Spence Restoration Nursery
- 11:15AM Learning and Leveraging BMPs for Your Community – Kari Mackenbach, URS
- 12:15 PM Lunch
- 1:00 PM Number Crunching Workshop for Design of Vegetated BMPs – Kari Mackenbach and David Dods, URS
- 3:30 PM Tour of the Earth Discover Center green stormwater management practices and Wrap-Up with Jill Hoffman, Empower Results

This seminar is a training opportunity for stormwater professionals interested in detailed design issues focusing on municipal and commercial applications.

These issues include sizing and designing BMPs for water quality and volume control, site selection and evaluation, and rain garden sizing. Design issues such as soils, pretreatment, inlets, outlets, and aesthetics will be addressed.

Attendees will receive technical training and skills that can be immediately applied to design and construction of infiltration practices for clients and employers.

### Register Now!

Workshop is limited and registrations will be accepted on a first-come first-serve basis.

Use registration form on the back of brochure.

***Tour will be conducted rain or shine—so come prepared! Dress appropriately.***

### Workshop Sponsored by:

AMEC  
City of Indianapolis—Office of Sustainability  
and the Clean Stream Team  
Eagle Creek Park  
EMH&T  
Empower Results, LLC  
Hoosier Aquatic Management  
Hoosier Heartland RC&D Council, Inc.  
Indiana Wildlife Federation  
Spence Restoration Nursery  
Soil and Water Conservation Districts in Boone,  
Brown, Hamilton, Hendricks, Hancock,  
Johnson, Marion, Monroe, Morgan, and Shelby  
Counties  
USDA- Natural Resources Conservation Service  
Williams Creek Consulting